

# Gallery raisonné

## ISLANDS

THE GREAT SOUTHERN OCEAN & ANTARCTICA

## TO ICE



**Justin Chambers**  
Apple huts at Law Base  
2010  
AAD 1934



Basketwork eels  
CC BY-NC-SA CSIRO



**Dave Harvey**  
Humpback whale breaching  
2011  
AAD 15751



**Doug McVeigh**  
Aurora Australis (Phenomenon) – Refuge  
2005  
AAD 83619



**Russell (Russ)**  
Hopcroft Cranchid squid larva  
2008  
AAD 31384



**Martin Riddle**  
Benthic communities at Casey  
1997  
AAD 23174



**Glenn Johnstone/  
JonnyStark**  
Benthic communities at Ellis Fjord  
2019  
AAD 70776



**Stanislav**  
Leopard seal underwater in Antarctica  
St 399815052



**Josh Lawrence**  
Krill (*Euphausia superba*) close-up  
2019  
AAD 64539



**Benjamin (Ben) Wallis**  
King penguin swimming underwater  
2008  
AAD 27255

# Gallery raisonné

ISLANDS

THE GREAT  
SOUTHERN OCEAN  
& ANTARCTICA

TO ICE

---



Sled  
c 1898  
wood, bamboo, rope,  
leather  
TMAG collection  
S2005.642



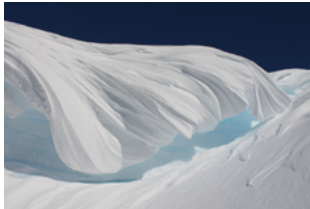
Compass  
2011  
Enq8207

# Gallery raisonné

# ISLANDS

THE GREAT  
SOUTHERN OCEAN  
& ANTARCTICA

# TO ICE



**Peter Cubit**  
Windblown snowdrift  
frozen into curved dune  
like forms  
2013  
AAD 25412



**Elanor Bell**  
Whale fluke  
2017  
AAD 77530



**Robbie Kilpatrick**  
King penguins on beach  
near Tractor Rock  
2015  
AAD 31761



**Eric Woehler**  
Pyramid iceberg  
1990  
AAD 11828



**Marcus Salton**  
Adult wandering  
albatross with a young  
chick in Amphitheatre,  
Macquarie Island  
2016  
AAD 34130



**Eric Woehler**  
Shuga ice  
2006  
AAD 24700



**Geo. D. Williams**  
Wharfs Hobart – Fruit  
Season  
Coloured Glass Lantern  
Slide (cracked Glass)  
Purchased, 2001  
Q2001.15.9.37



**CSIRO**  
Coldwater coral reef  
at 1183m depth on a  
Tasmanian seamount  
MNF Voyage IN2018\_V06



**Mutton birds**  
Q2001.15.9.37



**CSIRO**  
Coldwater coral reef  
at 1061m depth on a  
Tasmanian seamount  
MNF Voyage IN2018\_V06

# Gallery raisonné

## ISLANDS THE GREAT SOUTHERN OCEAN & ANTARCTICA TO ICE



**Ryan Bakker**  
Emperor penguins at  
Auster Colony  
2023  
AAD 83578



**John van den Hoff**  
Southern elephant  
seals fighting  
2005  
AAD 23723



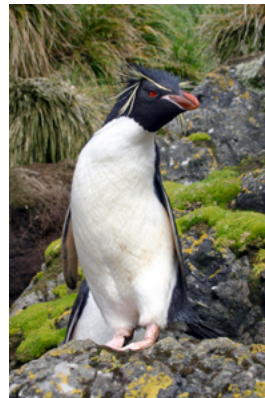
**Robert (Rob) Bryson**  
Chinstrap penguin  
2009  
AAD 11019



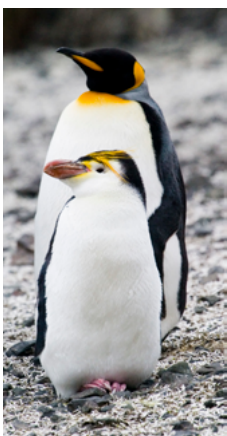
**Duncan Logan**  
Adálie penguins near  
Casey research station  
2020  
AAD 74961



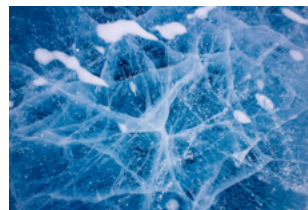
**Bradley Dennis**  
Adelie penguins on ice  
floe  
2005  
AAD 24413



**Kerry Steinberner**  
A curious rockhopper  
penguin – southern  
rockhopper penguin  
(*Eudyptes chrysocome*)  
2004  
AAD 9121



**Greg Hemsworth**  
Royal penguin standing  
in front of a king penguin  
on the beach  
2007  
AAD 36032



**Gordon Tait**  
Stress fracture patterning  
and frozen air bubbles  
in blue fresh water ice at  
Browning Peninsula  
2015  
AAD 23494





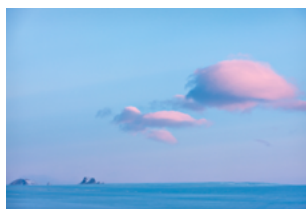
**Simon Cuthbert**  
Taken in the waters  
surrounding Patience  
Seamount  
2024  
Enq12246



**Ryan Osland/News Corp**  
Inside Brothers Point field  
hut, Macquarie Island  
2019  
AAD 63603



**Jessica Fitzpatrick**  
Helicopter transporting  
rescued passengers  
2014  
AAD 6708



**Ian Phillips**  
Pink clouds in the sky  
over the bay  
2011  
AAD 12364



**William E Howard**  
Antarctic expedition  
members standing on  
the deck of their ship  
Discovery, looking across  
at a whaling factory ship,  
Sir James Clark Ross  
1930  
Q443



**Photographer unknown**  
Penguins on Macquarie  
Island  
1960s  
Q1132



**Kym Newbery**  
Ice breakout at interface  
with rock island and sea  
ice  
2019  
AAD 33102

# Gallery raisonné

## ISLANDS

THE GREAT  
SOUTHERN OCEAN  
& ANTARCTICA

## TO ICE



Dana Bergstrom  
Moss bank at Casey  
Station  
2011  
AAD 69261



Justin Chambers  
Emperor penguin



Kate Kiefer  
Big Ben and Mt Drygalski  
2012  
AAD 3890



Peter Trusler  
Australian polar  
dinosaurs like  
Qantassaurus intrepidus  
(a close relative of  
*Leaellynasaura*)



Kerry Steinberner  
Macquarie Island  
landscape  
2004  
AAD 9426



Kirrily Moore  
Cold water octocoral  
(*Trachythela* sp.) from  
Trondheim, Norway



Pat Murray  
North east Tasmania  
2018



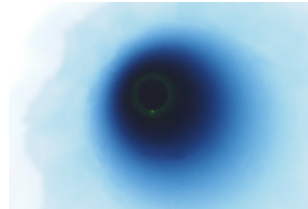
Broad-billed prions  
(*Pachyptila vittata*)



Andrea Izzotti  
Krill macro detail at night  
St 235286920



**Pete Harmsen**  
Ice floes seen from RSV  
*Nuyina*  
2022  
AAD 74599



**Joel Pedro**  
Drill hole for the Million  
Year Ice Core (MYIC)  
project  
2022  
AAD 78296



**Barend (Barry) Becker**  
View south from Hut Hill  
along beach of eastern  
side of isthmus to snow  
clad island plateau and  
escarpment  
2013  
AAD 35034



**Elanor Bell**  
Minke whale fluke  
2017  
AAD 77556



**Mutton birds**  
2010



Retrieval of sperm  
whale skull by Australian  
Defence Force Army  
Reserves  
Marine Conservation  
Program, Department of  
Natural Resources and  
Environment Tasmania  
2014



**James Doube**  
King penguins swimming  
underwater  
2016  
AAD 23264



Sperm whale stranding  
at Anthony's Beach,  
Tasmania  
Stanley Police  
2013



Plate LV. Skeleton of the Tasmanian Cachalot [sperm whale] as mounted in the Museum of the Royal College of Surgeons. Scale: 1/24. William Henry Flower (1868) On the Osteology of the Cachalot or Sperm-Whale (*Physeter macrocephalus*). The Transactions of the Zoological Society of London, Volume 6, Pages 309-376.  
Library 559.53.c





**Pete Harmsen**  
RSV *Nuyina* Voyage 2  
2022  
Commonwealth Copyright  
– All rights reserved  
AAD 71811



**Frank Brocklehurst**  
Dog team resting on the  
fast ice  
1964  
AAD 28064



**Adam Schiefelbein**  
Journey to Colbek Hut  
2020  
AAD 75731



**Jose Campos**  
Traverse convoy, drilling,  
ice cores, camp at Little  
Dome C  
2024  
AAD 82373



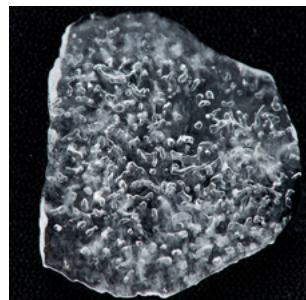
**Pete Harmsen**  
RSV *Nuyina* Voyage 2  
2022  
Commonwealth Copyright  
– All rights reserved  
AAD 71807



**Justin Chambers**  
Close up of feet of  
expeditioner walking on  
the ice, using ice chain  
equipped boots  
2013  
AAD 1949



**Simon Payne**  
Sorel boots  
2024  
AAD 81947



**Anthony (Tony) Fleming**  
Ice sample obtained  
as part of the Aurora  
Basin North ice core drill  
program  
2013  
AAD 1366



**Russell Marnock**  
Seldge dog team in  
action  
1975  
AAD 34246





**Chris Wilson**  
Fern leaf like Ice crystals  
on window pane  
2007  
AAD 46978



**Rex Greeno**  
*Travelling to Hunting  
Grounds*  
2022-23  
mixed media on paper  
collection of the artist



**Pete Harmsen**  
LEGO *Nuyina* close up  
2022  
Commonwealth Copyright  
- All rights reserved  
AAD 75903



**William Duke**  
*The Flurry*  
1848  
two-colour lithograph with  
hand colouring on paper  
Presented by Anne, John and  
Brian Correy in memory of their  
mother Lucy Madelaine Correy,  
née Denne, under the Cultural  
Gifts Program, 2011  
AG8498



**Caitlin Selfe**  
Caitlin Selfe undertaking fieldwork at Macquarie Island  
2023



**Justin Febey**  
Justin Febey at South Georgia Island  
2019



**Australian Antarctic Division**  
Signed studio image of Sir George Hubert Wilkins presented to John King Davis  
1938  
AAD 54344



**Julie Cuny**  
Wyatt Song undertaking the Antarctic Ice Kilometre swim at Mikkelsen Harbour  
2018



**Zanna Laws**  
Zanna Laws and Grant Maddock being interviewed on television outside their court appearance in Hobart  
1992



**Morton Henry Moyes**  
Charles Turnbull Harrison artist and biologist with the Western Party of the Australasian Antarctic Expedition of 1911-14  
1912  
AAD 57113



**Glenn Jacobson**  
Australian Antarctic Arts Fellow Alice Giles playing her harp at Mawson  
2011  
AAD 10890



**Jared McGhie**  
Kerryn Oates cooking at Davis Station  
2024



**Photographer unknown**  
Studio portrait of Louise Crossley  
Date unknown  
Q2016.39.1.1