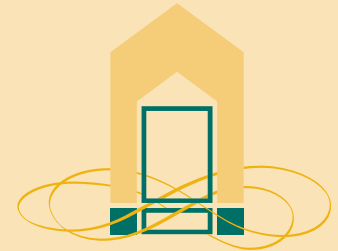


Friends

A PUBLICATION BY THE FRIENDS OF THE TASMANIAN MUSEUM AND ART GALLERY INC.

WINTER 2011



The FRIENDS of the
TASMANIAN MUSEUM
& ART GALLERY
incorporated

Fortunate Friends

Right: Clive Tilsley of Fullers Bookshop (left) with John Sexton, President of the Friends.



Below: TMAG's Sue Backhouse with Betty Churcher.

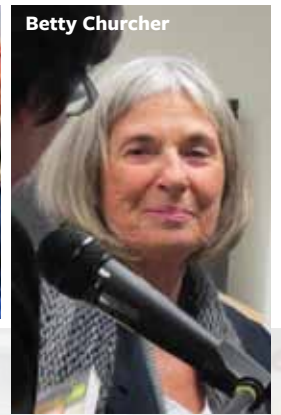
TMAG is lucky to have friends like Clive Tilsley, owner of Fullers Bookshop and long-time member of the Board of Trustees of TMAG. Recently Fullers held a sellout launch event with the celebrity critic, author, gallery director and TV presenter Betty Churcher — and Fullers donated the proceeds to the Friends of TMAG. Clive also did the same thing a few years ago, and this time the coffers of the Friends are \$1800 richer from his generosity.

The evening itself was a huge success. The irrepressible Peter West handled the MC duties with panache (Betty was a bit late in arriving, but nobody noticed — thanks Peter) and TMAG Senior Art Curator Sue Backhouse introduced Betty and asked insightful and incisive questions that drew out lively, erudite and entertaining responses. “Betty is someone I admire very much for her passion, her knowledge, and her tremendous contribution to Australian art,” says Sue. “It was a privilege to chat with her — particularly about her life and the path to becoming Director of the National Gallery.”

Sue's perceptive questions went far beyond the conventional, and evoked reminiscences and stories from Betty that were by times moving and hilarious. Now 80 and suffering



Betty Churcher



from macular degeneration, Betty displayed an energy and joie de vivre that would shame many people half her age.

For the two hundred or so who were fortunate to experience the charm, insight and entertaining erudition of Betty Churcher, this was an evening to treasure. It was also an evening to treasure the generosity of Clive Tilsley, the sponsor of the evening for the Friends of TMAG.

IN THIS ISSUE

THE FUTURE
STARTS HERE:
latest redevelopment
news from TMAG



THE FUTURE STARTS HERE

JENNIFER STORER has difficulty in hiding her excitement about the ceiling in what is now the Zoology Gallery — but will soon become something else entirely in the new look TMAG sometime next year. “Behind the false ceiling is a glorious original glass lantern roof, which will flood this space with light and create a true centre for the Museum,” Jennifer says.

As Project Manager of the Redevelopment, Jennifer has the job of putting into action the plans for the huge redevelopment of TMAG over the coming years. If you have been into the Museum recently you will have noticed that changes have already started to happen, as galleries close down or move to a different location. “The changes will happen a bit at a time,” Jennifer says. “Initially the focus will be on three areas — the present Zoology Gallery and entrance, the Bond Store, and the Courtyard, which will become the new entrance to the Museum.

While some people have expressed concern that the plans will change the Museum, Jennifer points out that the initial stages of the redevelopment are more of a return to the past than a leap into the future. The incorporation of the historic Watergate Wall into a new entrance, the refurbishment of the wonderful ambience of the Bond Store, and the opening up of the beautiful old roof in the central gallery will all bring back to TMAG some of the glory of the past, but in a modern museum-quality environment.

The new entrance and courtyard

The works here will start outside the wall, with new landscaping replacing the current TMAG car parking spaces. The roadway will become a walkway, making the whole area in front of the new entrance very friendly and welcoming from Davey through to Macquarie Street. And you will no longer have to worry about sliding on the loose gravel in the courtyard, as a new surface will lead from the entrance to the new reception in the Queen’s Warehouse, where the café is now. (The café will be moving to a temporary location in the old Maritime/Indigenous Gallery.) No glass pyramid, but it will still look good...

Right: Artist’s impression of the new mezzanine level of the Central Gallery.

Below: The courtyard and Bond Store as they are today.



The new surface of the courtyard will look like gravel but will be a smooth resin finish for easy walking. Timber ramps will allow visitors to negotiate the level changes with ease.



The Bond Store

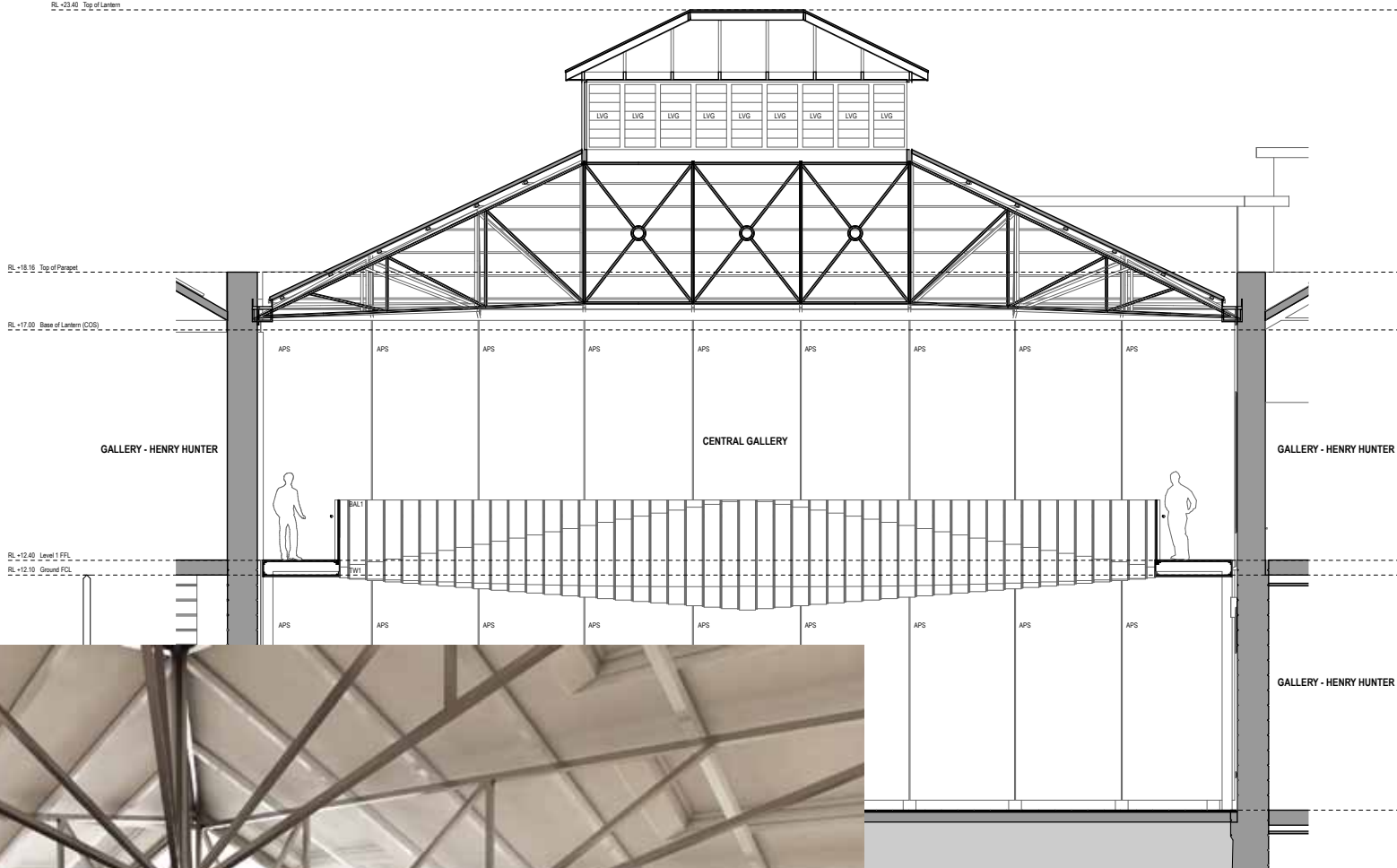
Access to this heritage building has been very limited for a number of reasons. “We will be able to use the Bond Store for a wide variety of uses once we bring it up to code requirements,” Jennifer says. “A new lift and new stairs with direct connections to the Custom House will open up the spaces and allow us to maximise the number of people for exhibitions and events.”



RL +12.40 Top of Lantern

RL +18.16 Top of Parapet
RL +17.00 Base of Lantern (COS)

RL +12.40 Level 1 FFL
RL +12.10 Ground FFL



Above: The Central Gallery as it was originally built, 1902.

The Central Gallery

This will become the new iconic space within TMAG with the lifting of the roof to create a substantial two and a half storey space. Jennifer adds: “The mezzanine will lend itself to a variety of uses, as well as allowing a new level of circulation and access to other spaces. The ground floor will rapidly become the heart of the Museum’s activities, especially in the months following the completion of this first stage of the redevelopment.”

All this really starts between now and September, so you will begin to see the changes the next time you visit. It’s an exciting time for everyone at TMAG — and there is even a space in the plans for a Friends first: a lounge room for the use of members near the café in the Commissariat Building, looking onto Macquarie Street. But more on that in a few months...

COMING UP

STAR/DUST: THE READING ROOM — BRIGITA OZOLINS

FRIENDS PREVIEW EVENT 20 JULY; OPEN 23 JULY–16 OCTOBER



The Reading Room is an exhibition about the wonderful world of books and reading. The gallery is transformed into a warm den of carpets, plush furniture and reading lamps. Lining the room are literally thousands of books, arranged in great piles, and across the red walls a mysterious code appears. Watch and listen to people — famous and ordinary — read excerpts from their favourite books.

Go to The Reading Room website and upload your own recorded readings to contribute to the art work: www.brigitaozolins.com/thereadingroom

Left: Brigita Ozolins, *The Reading Room*, video stills, 2011
Featuring: Airlie Ward, Lily Walker, The Lord Mayor, Ald Rob Valentine
Photographer: Raef Sawford



The FRIENDS of the
TASMANIAN MUSEUM
& ART GALLERY
incorporated

Patron: The Governor of Tasmania
His Excellency the Hon. Peter Underwood

President: John Sexton

Vice President: Julie Hawkins

Treasurer: Noel Harper

Hon. Secretary: Jean Boughey

Committee Members:

David Coleman Ross Fouracre

John Graham Digby Longhurst

Barbara Sattler Mareea Sutherland

Ex Officio:

Dr Alison Alexander, Trustee Representative
Bill Bleathman, Director, TMAG

Views expressed in this newsletter reflect the views of the author and not necessarily those of the editor, the Friends of the TMAG or the TMAG.

Publication editor: John Sexton

Graphic design: Julie Hawkins, In Graphic Detail

The FRIENDS of the TASMANIAN MUSEUM
& ART GALLERY *Incorporated*

40 Macquarie Street Hobart Tasmania
GPO Box 1164 Hobart TAS 7001
Phone (03) 6211 4177
Fax (03) 6211 4112
Email friends@tmag.tas.gov.au
Website www.tmag.tas.gov.au

The Reading Room is the second part in TMAG's star/dust series, a year-long contemporary art project featuring newly commissioned work from three Tasmanian artists presented with the support of Detached Cultural Organisation.

2011 CITY OF HOBART ART PRIZE

FRIENDS FUNCTION 24 AUGUST; OPEN 23 JULY–18 SEPTEMBER

Due to its shifting focus across disciplines and mediums, the City of Hobart Art Prize exhibition is among the most interesting in Australia's calendar of art prize events.

The 2011 Art Prize categories are Wood and Paper; the exhibition will include some of Australia's leading practitioners as well as work by some relative newcomers in the diverse fields of sculpture, design, installation, drawing, painting, printmaking, collage and paper making. The selected entries range from

the bold and three dimensional to delicate works on paper.

The judging panel for the two \$15,000 acquisitive City of Hobart Art Prizes includes Linda Michael, Senior Curator, Heide Museum of Modern Art (Melbourne); Rachel Kent, Senior Curator, Museum of Contemporary Art (Sydney); and Peter Hughes, Senior Curator (Decorative Arts), Tasmanian Museum and Art Gallery.

SMALL BUSINESS MEMBERS

Corinda's Cottages
Ewe-nique
Nick Griggs Land Surveyors
Hair 156
E.R. Henry Wherrett & Benjamin
Mona Nails
Tasmanian Coffee Roasters
Yellowpoint Vineyard

CORPORATE MEMBERS

**Ball & Chain
Restaurant**

Deloitte.

In *Graphic Detail*

FISH CENTRE
Mures
THE TASTY MARKET