



**What's On**

**Stories  
that  
move  
you**

**Winter 2013**

Free admission  
Open daily 10:00 am to 5:00 pm  
More information [www.tmag.tas.gov.au](http://www.tmag.tas.gov.au)

TASMANIAN		
MUSEUM		&
ART	GALLERY	

---

# Welcome

---

**The Tasmanian Museum and Art Gallery is a place for all generations to celebrate and experience what makes Tasmania unique.**

**Our collection embraces the diverse treasures of art, history and science, and provides the starting point for creating unexpected stories.**

**Our site includes the most significant and diverse collection of heritage buildings in the nation, and our visitor programs and exhibitions encourage contemplation and inspire enquiry.**

**We're sure you will enjoy your visit.**

---

# Shaping Tasmania: a journey in 100 objects

---

*Shaping Tasmania* is an online exhibition of 100 objects selected from those on display throughout the Tasmanian Museum and Art Gallery. You can find these objects on a trail through the galleries, allowing you to explore significant events and movements that have helped create the Tasmania we know today.

The first 99 have been drawn from Tasmania's State Collection, and the 100th has been chosen by the public.

Visit <http://shapingtasmania.tmag.tas.gov.au> where you can see all the objects and their locations.

*Shaping Tasmania* is a Tasmanian Museum and Art Gallery / ABC local partnership.



---

**Cover image:**

Tricky Walsh

*The quartz crystal piezoelectric generator, 2012*

balsa wood, bass wood, ply wood, cables and acrylic box  
Purchased with funds from the Contemporary Tasmanian Art Acquisition Fund, 2012

**Images (left to right):**

Four children bound for Fairbridge Farm School, Molong 1938.

Reproduced courtesy Molong Historic Society.

Ian Burns

*Afloat Asunder 2013*

wood, lights, magnifying glasses

Photo: Rémi Chauvin

Courtesy the artist, Anna Schwartz Gallery,  
mother's tankstation

---

# Temporary exhibitions

---

## On Their Own: Britain's Child Migrants

Argyle Galleries  
Level 1  
8 June – 25 August 2013

---

From the 1860s, more than 100,000 children were sent from Britain to Canada, Australia and other Commonwealth countries through child migration schemes. This exhibition tells their emotional stories, exploring the government endorsed schemes and the motivations behind them. Through detailed case studies, visitors will meet a number of former child migrants and find out more about their different experiences. This is an Australian National Maritime Museum travelling exhibition in association with National Museums Liverpool UK.



---

## Ian Burns: Afloat Asunder

Community Gallery  
Bond Store Basement  
14 June – 28 July 2013

---

Australian artist Ian Burns will work his wondrous whimsy over a two-month period, and present the outcome (who knows what, exactly?) inside the historically rich Bond Store exhibition space. *"Like the eighteenth-century philosophers Rousseau and Burke, I see curiosity as the first of all passions. I believe that by provoking the investigative impulse in the viewer there is scope to challenge their expectations and self-awareness."* – Ian Burns

Presented by Detached Cultural Organisation, in association with Dark Mofo and TMAG.



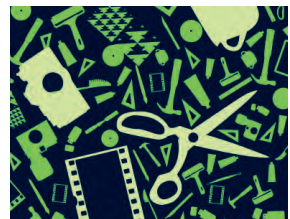
---

## City of Hobart Art Prize 2013

Argyle Galleries  
Level 1  
20 July – 1 September 2013

---

The City of Hobart Art Prize is celebrating its 25th year in 2013 with a national contemporary art survey, featuring entries from all media. This exhibition features a variety of works by artists, craftspeople and designers, which will be judged by Max Delany, Senior Curator (Contemporary Art) at the National Gallery of Victoria, Jam Factory CEO Brian Parkes and TMAG's Principal Curator of Art, Jane Stewart.



---

# Temporary exhibitions

---

## **A Passion for Nature: The work of William Charles Piguenit**

---

Argyle Galleries  
Level 1  
15 March – 30 June 2013

---

A Passion for Nature appraises the work of W C Piguenit (1836-1914), Australia's first native-born professional landscape painter. The exhibition comprises a wide selection of paintings, drawings, watercolours and prints from the Tasmanian Museum and Art Gallery which houses the most comprehensive body of the artist's work in any collection.



W C Piguenit (1836 – 1914)  
*Mt Olympus, Lake St Clair* (1888)  
oil on cardboard, 32.9 x 55.3

---

## **Colonial Women**

---

Salon Gallery  
Henry Hunter Galleries  
Level 2  
15 March – 21 July 2013

---

Colonial Women explores the work of ten artists active during the 1830s to 1850s, a period of cultural and scientific innovation and expansion in Van Diemen's Land under the patronage of Jane Franklin. Featured artists include Louisa Anne Meredith, Mary Morton Allport and Theresa Walker. Collectively, the work of these artists contributes to our understanding of life in colonial times.



Louisa Anne Meredith  
(1812 – 1895)  
*A Cool Debate* (c. 1891)  
pencil, watercolour, gold paint,  
chinese white highlights and  
gum, 27 x 38

---

## **Drawn with Distinction: Australian Artists**

---

Salon Gallery  
Henry Hunter Galleries  
Level 2  
2 August – 1 December 2013

---

Drawn with Distinction features a range of superb drawing by artists working in Tasmania and interstate from 1900 to the 1960s, selected to complement and reflect the period of work in the *Tasmania: Art and Design* exhibitions. Among a diverse approach to subject and style are works by Russell Drysdale, Margaret Preston, William Dobell, Thea Proctor, Lloyd Rees, Joy Hester, Donald Friend, Florence Rodway, Albert Tucker and Jessie Traill.



Ethel Nicholls (1866 – 1956)  
*Still life with Chinese porcelain*  
(1934)  
watercolour, 22.4 x 26.5  
Presented by Marjory Carter,  
niece of the artist, 2012

---

# Tasmania: Art and Design

The Tasmania: Art and Design galleries take you on a journey through significant periods in the history of Tasmanian art and design, from the early 1800s to the present day.

---

## Dispossessions and Possessions

---

Henry Hunter Galleries  
Level 2

---

Explore treasures of our Colonial and Arts and Crafts collections, including works by notable artists such as John Glover, Benjamin Duterreau and W C Piguenit.

---

## Progress and Politics

---

Henry Hunter Galleries  
Level 2

---

Discover how Tasmanian artists have explored the politics of the environment, race and gender in their work, featuring works from notable practitioners such as Raymond Arnold and Geoff Parr.

---

## Critical Operations

---

Argyle Galleries  
Level 1

---

Exploring twenty first century issues of environment, identity and the body, Critical Operations presents work by artists who critique and celebrate contemporary culture through a wide range of vibrant and energetic practices.

---

## Modern Age

---

Henry Hunter Galleries  
Level 2

---

Explore the influence of the global Modernism movement on Tasmanian art, as well as the Australian studio crafts revival in the 1960s and 1970s.



Critical Operations

## Australian International Cultural Foundation

The Tasmanian Museum and Art Gallery would like to acknowledge the generous support of the Australian International Cultural Foundation, an affiliate of Art Exhibitions Australia, in creating the Tasmania: Art and Design galleries.

---

# Permanent collections

---

## Bond Store Galleries

---

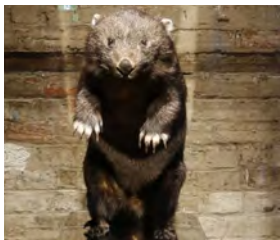
### Our living land: Encountering an upside down world

---

Ground level

---

Explore how Tasmania's natural environment has been used to create wealth, advance science and define the state, and discover how Europeans responded to the unfamiliar plants and animals they encountered when they first arrived in the new colony.



Our living land

---

### Our changing land: Creating Tasmania

---

Level 1

---

Investigate the making of Tasmania, focusing on the period from the 1800s to 1901, a time of spectacular transformation. Explore how the state has become a place of environmental change and complexities, of creativity and of a particular social identity.



Our changing land

---

### Our land: *Parrawa, parrawa!* Go away!

---

Level 2

---

Discover the story of Aboriginal people and colonists following the invasion of *Iutruwita*, now called Tasmania, focusing on the Black War. Go on an immersive journey through this dark period of history, with objects, contemporary historical accounts and films all helping to bring the story to life.



Our land: *Parrawa, parrawa!*  
Go away!

---

# Permanent collections

---

## Henry Hunter Galleries Level 1

---

### The Central Gallery

---

The richness of TMAG's extensive collection is on show in a special exhibition under the spectacular lantern roof, featuring artefacts from Tasmania and around the world.

---

### *ningina tunapri*

---

*ningina tunapri* means 'to give knowledge and understanding'. Explore the journey of Tasmanian Aboriginal people across all generations in this newly-refreshed exhibition.



The Central Gallery

---

### Tasmania: Earth and Life

---

Explore Tasmania's unique geological history, and its unusual complement of plants and animals which each have their own story to tell.

---

### The Power of Change

---

Investigate key areas of twentieth century Tasmanian life and their national and international significance and influence.

---

### The Thylacine: Skinned, Stuffed, Pickled and Persecuted

---

Learn the story of the thylacine, or Tasmanian Tiger, and its interactions with society through a variety of fascinating objects from the State Collection.

## Argyle Galleries Level 2

---

### Medals and Money: Stories from the State Numismatics Collection

---

Discover more than 350 medals and coins, from the end of convict transportation to Federation banknotes and the start of decimal currency.

---

### Islands to Ice

---

Find out about Antarctica and the Southern Ocean and explore the places, people, creatures and phenomena that make the great southern wilderness a world of its own.



Islands to Ice

---

# Family fun

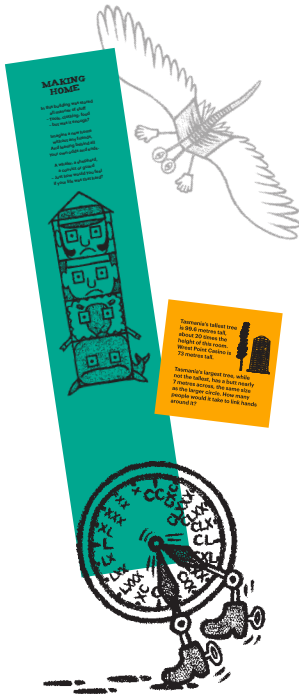
With more interactive displays and resources available than ever before, children are able to learn side-by-side with their families throughout TMAG.

---

## Children's labels

We know different family members have different needs (and even see things from different heights!)

Look out for specially placed **teal** and **orange** coloured children's labels throughout our galleries.



---

## Gallery trails

There are trails to follow (indicated by the symbols below), connecting artworks and objects in the Modern Age Gallery (Henry Hunter Galleries, Level 2) and Our changing land (Bond Store Galleries, Level 1). Ask one of our friendly gallery attendants if you need help finding a trail.



---

## Learning on wheels

Watch out for our mobile Museum and Art Carts, and discover the secrets stored within them.

The Art Cart is primarily designed for use with art education staff to enhance programming, while the Museum Cart focuses more on a multisensory engagement with the wonder of objects.

---

## Backpacks and Toolkits

Borrow a free Discovery Backpack or Museum Toolkit, filled with challenges, puzzles and tools, from the Visitor Information Desk. Backpacks map out quests throughout TMAG, while toolkits provide a set of hands-on tools for exploring our collection.



Young visitors exploring a Discovery Backpack  
Photo: Lucia Rossi





### Interactive exhibitions

There are hands-on, interactive zones within almost all of our exhibitions. Keep an eye out for the interactive stations below (indicated by the hand icon) – they're just some of the surprises in store as you wander through TMAG.



### Learning and discovery events

The Centre for Learning and Discovery hosts a range of engaging, hands-on events during the year in its dedicated space off the Level 1 Link Foyer, and throughout TMAG.

These include Family Days on the last Sunday of each month.

For further information check out the events listing on page 9 or visit our website.



Critical Operations.  
Photo: Lucia Rossi



Modern Age



Dispossessions and Possessions

---

# Facilities

---

## Members' Lounge

Join one of TMAG's membership groups to enjoy access to the new Members' Lounge, as well as many other exclusive benefits.

Ask at the Visitor Information Desk or Museum Shop how to sign up for the TMAG Foundation, Friends of TMAG or the TMAGgots, or visit our website for details.

Access to the lounge is also available for visiting members of interstate museum and art gallery membership groups, please see the Visitor Information Desk for details.

---

## Community Gallery

Located in the basement of the historic Bond Store, this space plays host to a variety of exhibitions, events and activities all with a community focus.

---

## Shop

Located adjacent to the Visitor Information Desk, the award-winning Museum Shop offers a range of gifts, home wares, books, toys, jewellery and artisan objects which showcase the museum's collections and heritage.

---

## Café

Enjoy great coffee, delicious meals or a drink with friends and family in the fully licensed Courtyard Café.

The café is open 7:30 am to 4:30 pm Monday to Friday, and 9:00 am to 4:30 pm Saturday, Sunday and Public Holidays.



---

# Events

## June

**13**

Bond Store open late for opening of *Ian Burns: Afloat Asunder*

---

5:00 pm – 7:00 pm

**14**

Bond Store open late for *Ian Burns: Afloat Asunder*

---

10:00 am – 10:00 pm

**20**

Bond Store open late for *Ian Burns: Afloat Asunder*

---

10:00 am – 10:00 pm

**21**

Whole of TMAG open late to mark the Winter Solstice

---

10:00 am – 10:00 pm



**22**

Bond Store open late for *Ian Burns: Afloat Asunder*

---

10:00 am – 10:00 pm

**30**

Family Day

---

11:00 am – 3:00 pm

Photo: Lucia Rossi

## July

**15-19**

School Holiday Program

---

11:00 am – 2:00 pm

**28**

Family Day

---

11:00 am – 3:00 pm

## August

**25**

Family Day

---

11:00 am – 3:00 pm

---

# Visiting us

---

## Access

There is level access to all public areas of our site. Loan wheelchairs are available from the Visitor Information desk. Guide dogs are welcome.

## Opening Hours

Open daily  
10:00 am – 5:00 pm  
Closed Anzac Day, Good Friday and Christmas Day

## Admission

General admission is free. Charges may apply to special exhibitions

## Location

Dunn Place, Hobart.

## Contact

[www.tmag.tas.gov.au](http://www.tmag.tas.gov.au)  
(03) 6211 4134  
[tmagmail@tmag.tas.gov.au](mailto:tmagmail@tmag.tas.gov.au)

---

## Please



Take flash-free photos for personal use, unless otherwise noted. Tripods may not be used.



Leave backpacks, large bags, umbrellas and food and drink in the cloakroom for us to look after as you explore our galleries.



Look closely, but please do not touch.



Don't smoke. The Tasmanian Museum and Art Gallery is a smoke free site.

---

## Tours

11:00 am  
Special interest tour

Themed and exhibition specific. Check at the Visitor Information Desk for the latest listings.

1:00 pm  
Highlights tour A

Explore our Welcome Garden, historic Commissariat Complex and the Bond Store exhibitions.

2:00 pm  
Highlights tour B

Discover the treasures of the Central and Henry Hunter galleries.

Tours run for approximately 40 minutes and are available from Wednesday to Sunday.

Tour times are subject to change and availability so please check with the Visitor Information Desk.



This brochure proudly printed with the support of the Friends of the Tasmanian Museum and Art Gallery.