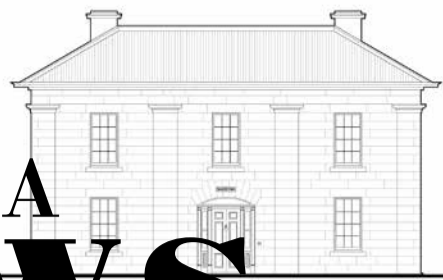




# NARRYNA NEWS

For Members and Supporters  
of Narryna Heritage Museum



## TAX-DEDUCTIBLE GIFTS

NARRYNA is registered as a charity with the Australian Charities and Not-For-Profits Commission (ACNC). Narryna may receive financial donations and gifts of culturally-significant material. Please consider Narryna as part of your giving this financial year. Contributions to Narryna's renewal program will be an investment in both your local community and Tasmanian tourism.

SUMMER 2017

## EXHIBITION

# SCRIMSHAW — THE ART OF THE MARINER

FRI 10-MON 13 FEBRUARY



COME VOLUNTEER  
AT NARRYNA!

PHILLIPA FOSTER is the Tasmanian Museum and Art Gallery's House Museums Coordinator. She is seeking volunteers for Narryna in front-of-house guiding roles, leading school education tours, undertaking gardening projects and helping with special events. For the more adventurous, we are making Narryna a base for tours of 1920s Markree.

Volunteering is a great way to give back to your community through caring for an exceptional historic property and collection. It's a great way to meet people and many friendships have sprung from volunteering at Narryna.

For a volunteer application package please contact Phillipa at [volunteer@tmag.tas.gov.au](mailto:volunteer@tmag.tas.gov.au)

Above: Volunteer collection study day: Fay Harding and Danica Fuller unravel collection secrets in the breakfast room.



Right: Hard graft in the larder!



Above: Peter Bignell from Belgrove Distillery charring barrels.

TASMANIA'S rich trove of vernacular art attracts tourists and collectors alike. One of the finest private collections of scrimshaw worldwide will be on exhibition at Narryna for Hobart's MyState Australian Wooden Boat Festival. Whaling in Tasmanian waters was Australia's leading

export industry pre-1840. Colin Thomas has formed an extraordinarily wide-ranging scrimshaw collection from sperm whale teeth and panbones engraved with whaling scenes to elaborately carved walking canes, sailors' gifts to their sweethearts and tools for maintaining the majestic rigging of the

whaling ships. Colin will give several floor talks during the MyState Australian Wooden Boat Festival. Check Narryna's webpage for opportunities to handle scrimshaw.

*Note: the exhibition does not support the continuance of whaling.*

Join us for **SCRIMSHAW @NarrynaUpLate**, a Festival bar with nautical music in Narryna's forecourt, Saturday 11 February from 6pm.

Free entry to Festival bar. Entry to exhibition adult \$10, conc \$8, child \$4. Bookings not required.



Left: Whale tooth c. 1850 titled 'Whaling at Twofold Bay N.S.W.' Colin Thomas collection

Above left: Pilot whale jaw bone engraved with a scene of Susannah bathing c. 1860. Narryna collection

## CHRISTMAS CRAFT SPIRIT MARKET

THE INAUGURAL Christmas Craft Spirit Market, held at Narryna on 10 December 2016 was a great success, raising over \$4,000 for Narryna's infrastructure program. The Craft Spirit Market aligned Narryna's handcrafted brand with that of the Tasmanian distillers as both combine the traditional with the innovative. These great images have been stolen from social media.

For your diary our next Craft Spirit Market will be Saturday 9 December 2017.







## NARRYNA HERITAGE MUSEUM

103 Hampden Road  
BATTERY POINT TASMANIA 7004  
E: [Scott.Carlin@tmag.tas.gov.au](mailto:Scott.Carlin@tmag.tas.gov.au)  
M: 0419 622 658



## NARRYNA COUNCIL

NARRYNA'S governing Council comprises

President: Richard Watson, Secretary: Scott Carlin, Treasurer: Sally Ord, TMAG Director: Janet Carding, Community representatives: Rowanne Brown, Ann Cripps, Anne Horner, Myfanwy Kernke, TMAG representatives: Patricia Sabine and Chris Tassell.

## WEDDINGS AT NARRYNA

CONSIDER Narryna as the venue for your wedding ceremony. See the Narryna webpage for further details: [http://www.tmag.tas.gov.au/visitor\\_information/narryna\\_heritage\\_museum](http://www.tmag.tas.gov.au/visitor_information/narryna_heritage_museum)

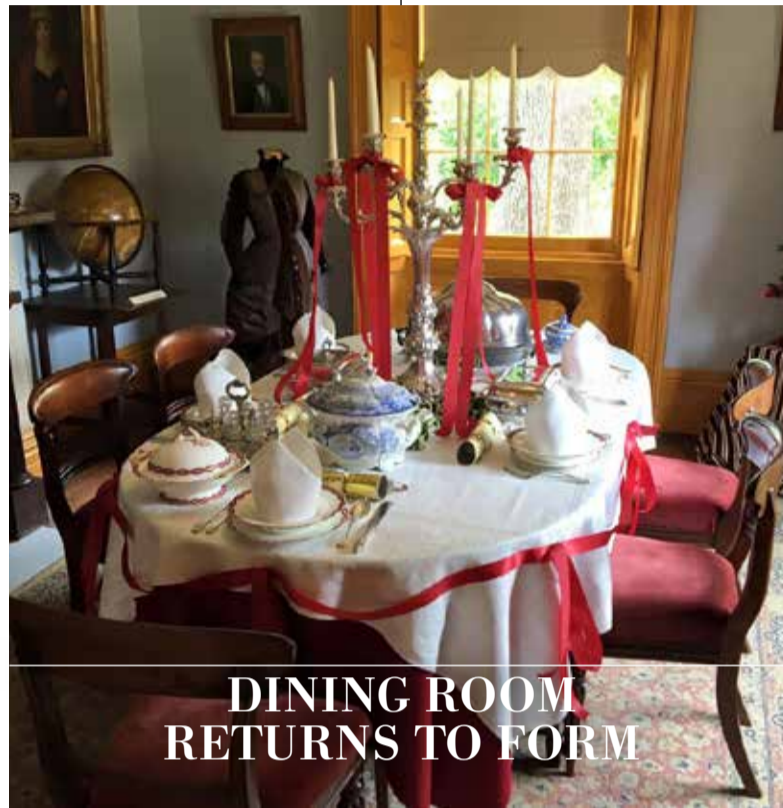


## THANKS, BUNNINGS

BUNNINGS, Glenorchy, recently donated \$500 worth of tools to help our community garden volunteer group, who meet weekly with a monthly working bee. For information on how to get involved contact Phillipa at [volunteer@tmag.tas.gov.au](mailto:volunteer@tmag.tas.gov.au)



Kylie Winkworth conducts the Arts Tasmania significance assessment workshop, October 2016.



## DINING ROOM RETURNS TO FORM



Glenn Newstead and John Murphy apply oak-grained treatment to the panels of Narryna's dining room door.

AGROPLAND FOUNDATION Grant has allowed Narryna's dining room joinery to be oak grained according to in situ evidence. An appropriate c. 1840 wallpaper is yet to be replicated for the dining room. Paint scrapes have been taken of the front door and inset portico to allow us to return these elements to their c. 1840 appearance.

## COSTUME COLLECTION RECOGNISED

FUNDED BY A NATIONAL Library of Australia Community Heritage training grant, a highly successful community workshop in significance assessment was held on 1 October 2016, attended by 30 people from museums across Tasmania. The workshop was a collaboration between Narryna, TMAG, National Library of Australia, Arts Tasmania and Museums Australia Tasmania and resulted from the NLA-funded significance and preservation-needs assessments of the Narryna costume

collection. Workshop presenter, Kylie Winkworth, is a museum and heritage consultant and co-author of *Significance 2.0: A Guide to Assessing the Significance of Collections*. Participants were encouraged to present short talks on costumes in their own collections. Tasmania's costume riches left participants wanting more historic costume studies. For more information on a National Library of Australia Community Heritage grants go to: [www.nla.gov.au/awards-and-grants/chg](http://www.nla.gov.au/awards-and-grants/chg)



## SCRIMSHAW – THE ART OF THE MARINER

Fri 10–Mon 13 February

This exhibition is part of the MyState Australian Wooden Boats Festival. Whaling in Tasmanian waters was Australia's leading export industry pre-1840. Narryna, the 1830s house of merchant, shipbuilder and whaler, Captain Andrew Haig, presents an exhibition of scrimshaw masterworks from the collection of Colin Thomas. This is one of the finest private collections of scrimshaw worldwide. See all manner of scrimshandering from sailors' gifts to their sweethearts to tools for maintaining the majestic rigging of the whaling ships. This exhibition does not support the continuance of whaling. Narryna will be open 10am – 6pm throughout the Festival.

Bookings not required. For more information on the MyState Australian Wooden Boat Festival go to: <http://www.australianwoodenboatfestival.com.au/>

## SCRIMSHAW @NarrynaUpLate

Sat 11 February, from 6pm

Festival bar with nautical music in Narryna's forecourt. Free entry to Festival bar. Entry to exhibition Adults \$10, concession \$8, child \$4. Bookings not required.

## GEORGIAN GLASS ROADSHOW

Narryna, Sun 19 February, 5pm

A lighthearted look at serious glass! Andy McConnell, passionate about Georgian and Victorian glass, is a down to earth lover of the Antiques Roadshow, is passionate about Georgian and Victorian glass. Andy will take you through the finer points of glass through an examination of pieces from TMAG and Narryna's collections. Employing his unique blend of expertise, passion and humour, he will discuss individual pieces as well as placing fine glassmaking in its wider historic contexts, aesthetically, technically and in its wider social roles. There will be an opportunity at this exclusive event to share insights with Andy over a glass of wine at the conclusion.

## POST MORTEM @Narryna

Fri 16–Sun 25 June

In association with Dark MOFO 2017. Watch this space! Bookings not required.

## NARRYNA CELEBRATES 60 YEARS AS A MUSEUM

on 30 November 2017

Commemoration date yet to be decided. Watch this space! Bookings not required.

## CHRISTMAS CRAFT SPIRIT MARKET

Sat 9 December, 2pm–6pm

Tasmanian whisky and craft spirits distillers return to Narryna for this popular annual event. This is the opportunity to meet the makers, choose your Christmas tipples and select that gift that is so difficult to give away. Narryna, built Salamanca Place's first merchant, will be open and dressed for Christmas courtesy of the Hobart Embroiderer's Guild. Funds raised will support Narryna, which celebrates 60 years as a museum in 2017. Bookings not required.

Left: From the Scrimshaw exhibition: whaler's chest c. 1830-60 Australian red cedar (pit sawn) made by or for 'D-L', from Tasmania's east coast. The trunk has been inlaid with whalebone subsequent to its original manufacture. The central compass is flanked by sextants, a full moon to the right and crescent moon to the left. Colin Thomas collection.