

Your visit

Visiting us

Access

There is level and lift access to all public areas of our site except the Private Secretary's Cottage. Loan wheelchairs are available from the Visitor Information Desk. Assistance animals are welcome.

Opening Hours

Tuesday – Sunday
10:00 am – 4:00 pm
Closed Good Friday, Anzac Day and Christmas Day

Admission

General admission is free, but donations are welcome. Charges may apply to special exhibitions.

Location

Dunn Place, Hobart.

Contact

www.tmag.tas.gov.au
(03) 6165 7000
tmagmail@tmag.tas.gov.au



All information in this visitor guide is correct at time of printing, however changes may occur at short notice. We advise that you please check with us before making your visit.



more information.

Membership

and in the lifts.

Temporary exhibitions

throughout the year.

Family fun

your TMAG explorations.

Backpack (ages 7-12) or

Museum Toolkit (ages

4-7) from the Visitor

Information Desk to aid

your TMAG explorations.

Explore the wonders

of the Museum Cart in

the Central Gallery, and

look out for our **teal**

and **orange** coloured

children's labels and

interactive zones

throughout the galleries.

Keep an eye out for

regular School Holiday

Programs, as well as our

Family Days on the last

Sunday of each month.

Free wi-fi services are

available in most galleries

and Courtyard Café.

Wi-fi access

It's open Tuesday to Friday,

9:00 am – 4:00 pm;

Saturday and Sunday,

10:00 am – 4:00 pm.

Free wi-fi services are

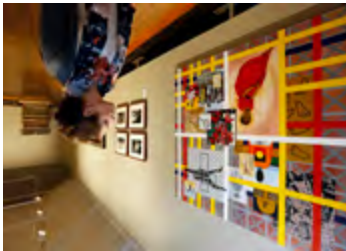
available in most galleries

and Courtyard Café.

Wi-fi access

Explore

Welcome to the Tasmanian Museum and Art Gallery (TMAG). Our collection embraces the diverse treasures of art, history and science and our site includes some of the most significant heritage buildings in the nation. We're sure you will enjoy your visit.



Shaping Tasmania: a Journey in 100 objects

Explore our collection with *Shaping Tasmania*, an online exhibition of 100 objects carefully selected from those on show at the museum to tell the story of Tasmania.

Follow the trail of objects through the

Complex and the Bond Store.

Explore the Welcome Garden, Commissariat

1:00 pm

Join a themed or exhibition-specific tour.

Check at the Visitor Information Desk for

the latest listings

September – May

1:30 pm

Go on a Winter Highlight Tour to learn about

TMAG's exciting stories.

Tours are available Wednesday to Sunday.

Group tours can be arranged on request.

Toy Sailor

unknown, 1803, bone

SHAPING TASMANIA

<http://shapingtasmania.tmag.tas.gov.au>.

Follow the trail of objects through the

Complex and the Bond Store.

Explore the Welcome Garden, Commissariat

1:00 pm

Join a themed or exhibition-specific tour.

Check at the Visitor Information Desk for

the latest listings

September – May

1:30 pm

Go on a Winter Highlight Tour to learn about

TMAG's exciting stories.

Tours are available Wednesday to Sunday.

Group tours can be arranged on request.

Toy Sailor

unknown, 1803, bone

SHAPING TASMANIA

<http://shapingtasmania.tmag.tas.gov.au>.

Follow the trail of objects through the

Complex and the Bond Store.

Explore the Welcome Garden, Commissariat

1:00 pm

Join a themed or exhibition-specific tour.

Check at the Visitor Information Desk for

the latest listings

September – May

1:30 pm

Go on a Winter Highlight Tour to learn about

TMAG's exciting stories.

Tours are available Wednesday to Sunday.

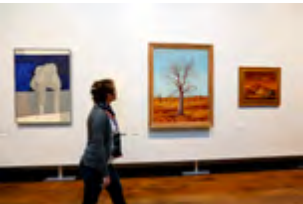
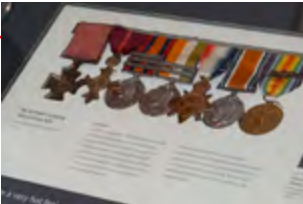
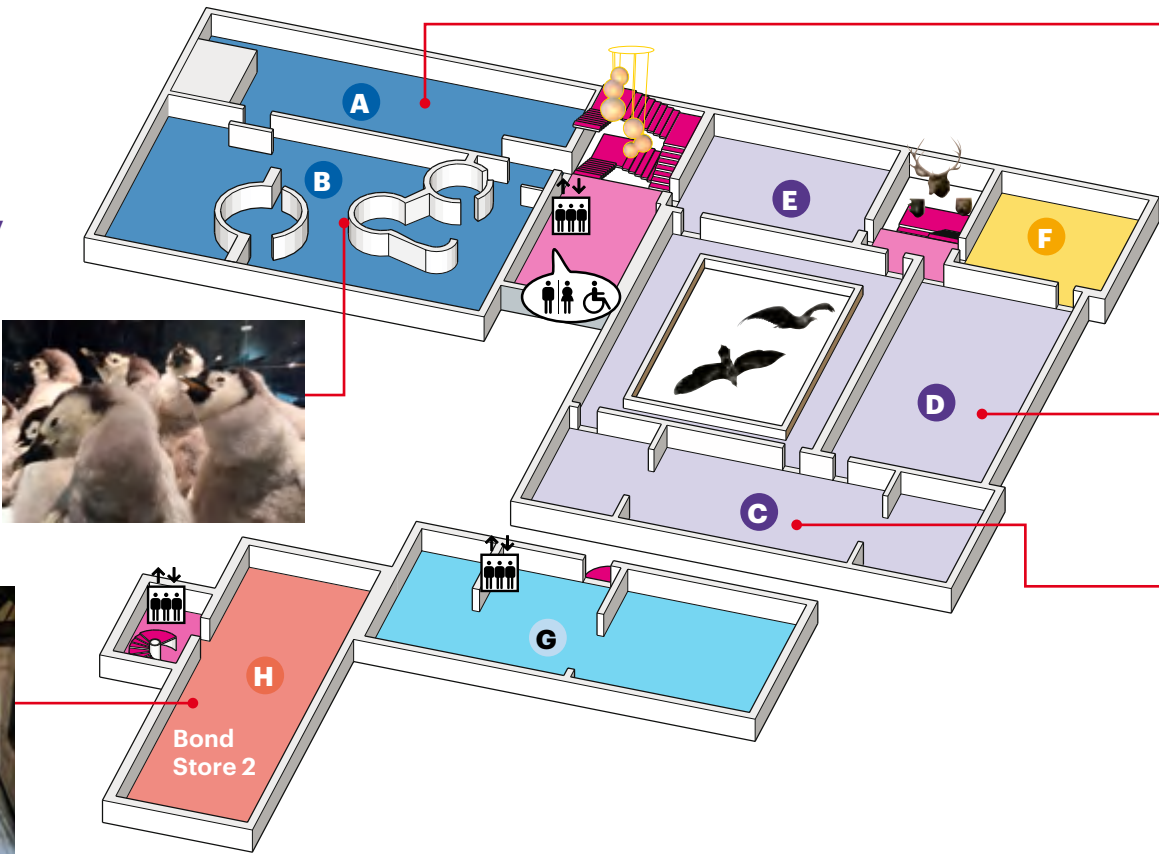
Group tours can be arranged on request.

Level 2



- A** Medals and Money
- B** Islands to Ice: Antarctic Gallery
- Tasmania: Art and Design, 1800 – late 20th century**
- C** Colonial art and decorative arts
- D** Mid-20th century art and decorative arts
- E** Late 20th century art and decorative arts
- F** Salon Gallery: Temporary exhibitions
- G** Centre for Learning and Discovery: Programmed activities only

- Bond Store 2**
- H** Our land: Parrawa, parrawa Go away! 19th century Tasmania

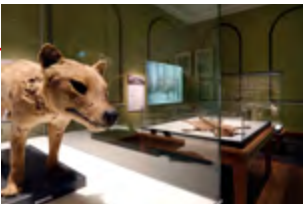
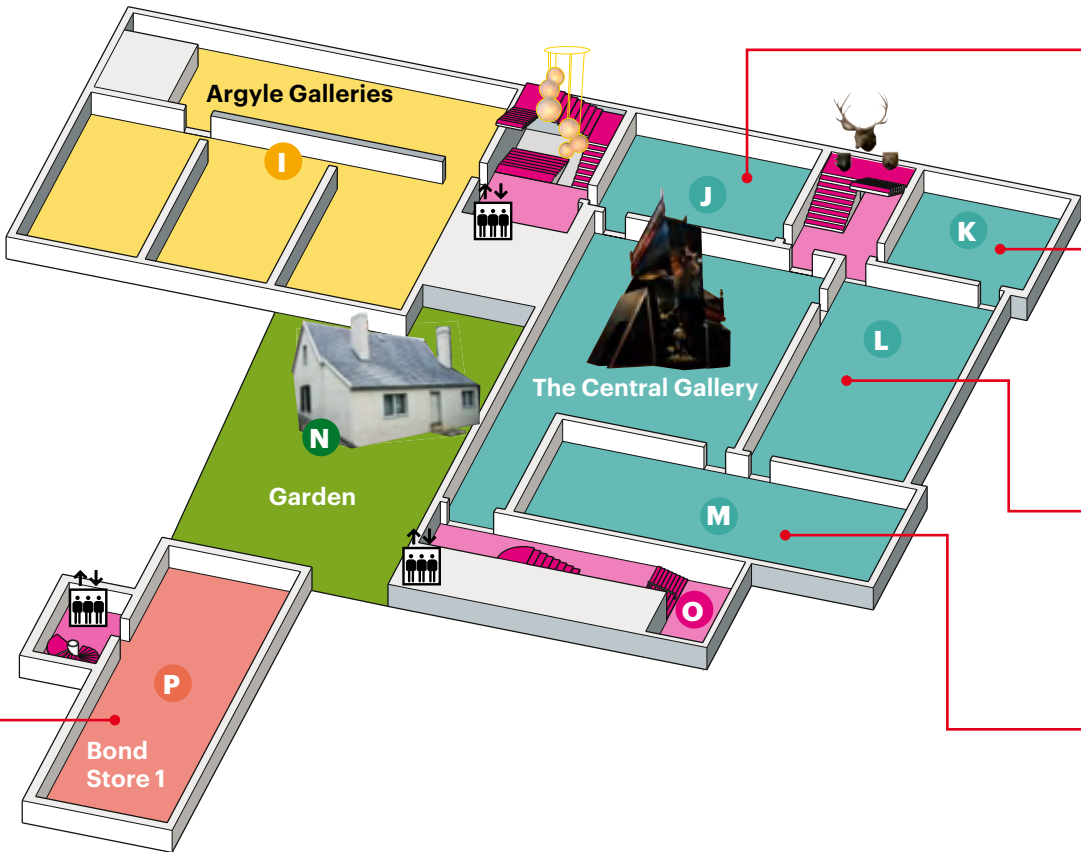


Level 1



- I** Argyle Galleries: Temporary exhibitions
- Tasmania: Life and Environment**
- J** Power of Change: 20th century Tasmania
- K** The Thylacine Gallery
- L** Tasmania: Earth and Life: Natural sciences
- M** ningina tunapri: Tasmanian Aboriginal culture
- N** Private Secretary's Cottage (1815)
- O** Link Foyer: Temporary displays

- Bond Store 1**
- P** Our changing land: Creating Tasmania: 19th century Tasmania



Ground



- Bond Store Ground**
- Q** Our living land: Encountering an upside down world 19th century Tasmania
- Bond Store Basement**
- R** Temporary exhibition and event space
- S** Courtyard
- T** Welcome Garden



The Bond Store (1824-26)
Originally served as a Government store for bonded goods such as tobacco and spirits. The Bond Store galleries feature permanent exhibitions exploring 19th century Tasmanian history.



The Queen's Warehouse (1869-70)



Commissariat Store (1808-10), Tasmania's oldest surviving public building.

Visitor map

Key

- Toilets
- Lifts

- Locker area
- Visitor Information Desk

- Members' Lounge
- Museum Shop

- Courtyard Café